

POWERFUL VIDEO MONITORING SOLUTIONS FOR
MANUFACTURING



The **CathexisVision** solution boosts **safety** and **efficiency** for manufacturing facilities.



The CathexisVision video management software (VMS) solution provides smart technology and management tools to **protect** personnel, ensure operational **efficiency**, and **reduce risks** to infrastructure.

CathexisVision links **video monitoring** with a powerful range of **actions**, and **manages integrated systems**, to address the security and operational requirements of manufacturing:

- ✓ Remote and multi-site management
- ✓ Reliability in all climate conditions
- ✓ Centralised alarm management
- ✓ Failover and camera anti-tamper
- ✓ Environmental and fire alarm integration
- ✓ Intrusion detection
- ✓ Object classification and tracking



CathexisVision **does the analysis for you**, optimising the control room environment.



Fast, **real-time alerts** allow response teams to react to incidents quickly.



System reliability and **low maintenance** maximise up-time and cost-effectiveness.



By performing automated functions, **video analytics** create an easy-to-monitor site.



Cybersecurity and privacy features help you address **compliance and data protection**.



Third-party systems **integration** amplifies the value of the CathexisVision solution.



The solution is **scalable** can be **tailored** to meet your site's unique needs.

Keep the site **safe**
for all and ensure operations
run **smoothly**.



AI-Powered Video Analytics Suite

- Analysis of **workflow**, motion, **occupancy**, abandoned **objects**, and **vehicles**.
- Use analytics data to trigger actions.
- Detect people **crossing perimeter** boundaries or entering unauthorized zones.
- The **object classification algorithm** allows users to search for objects by type and using other filters.
- Integration with **specialised analytics devices** provides triggers to the system so that user-defined actions can be automated.



Manage Vehicles and Parking

- With **Automatic Number Plate Recognition**, licence plates can be compared to **lists of plates** in user-configured **groups**.
- Automate actions (such as alarms or controlling third-party devices) for when a recognised plate falls within a designated group.
- Find plates with CathexisVision's comprehensive database **search facility**.
- The speed algorithm provides alerts and recordings of vehicles travelling at speeds **higher** than a set limit.



Perimeter Monitoring

- CathexisVision's sophisticated tools work with standard or thermal **cameras** to give **real-time alerts**, assisting staff in making informed decisions.
- Video analytics to detect perimeter breaches or loitering.
- The software integrates with third-party **electronic fence monitoring systems**, amplifying **security** when used with video analytics.
- These methods, paired with the control room and alarm management solution, guide operators to areas of concern, allowing them to take **immediate action**.

CathexisVision **protects** people, resources and infrastructure.



Protecting Public Spaces

- Manage **thousands of cameras**, **view events**, and **take action**.
- Through **AI-powered video analytics**, the system to create **alerts** in response to unusual activity in designated areas.
- **Search tools** empower operators to find footage of incidents quickly and easily.
- Complex procedures, such as arming intrusion panels, can be performed **locally or remotely**.



The Power of Integration

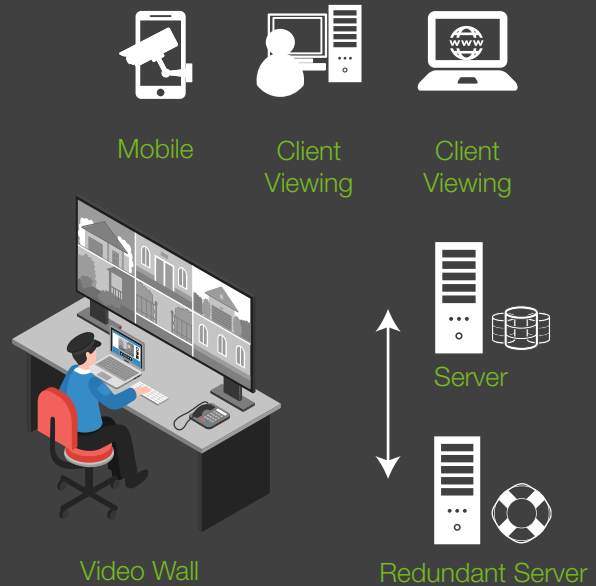
- Integration with access control, fire panels, alarm panels, perimeter protection, license plate recognition, environmental management, analytics, and **more**.
- CathexisVision provides **video verification** of third-party system events and links these to **actions**.
- **Bi-directional audio communication** through **intercom** integration.
- **Create alerts**, mine databases, or perform sophisticated procedures.
- For example, if someone tries to enter an unauthorized area, an **alarm** can be triggered, and the operator can be alerted immediately.





Optimised Control Room

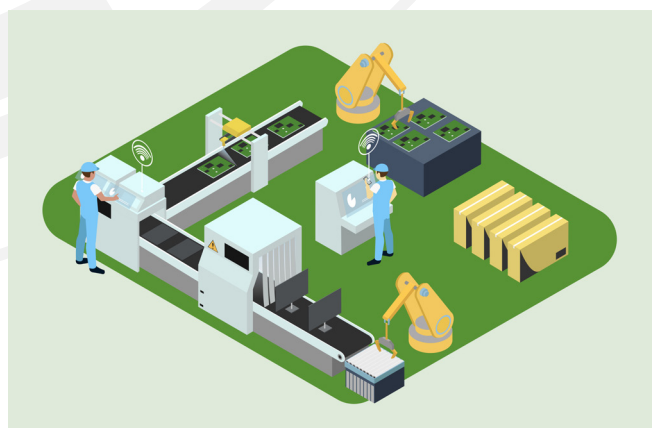
- **Simultaneous connection** to multiple sites with concurrent viewing of cameras.
- Continuous system **health monitoring**.
- **User-friendly** interface.
- Investigate areas of interest with a multi-layered **map**, which provides graphical alerts from system events and allows operators to control third-party devices.
- Assign priority levels and resources to events with the **Alarm Management Gateway**. When an event occurs, operators are guided to the camera/map and procedures are presented. Events and operator activities are databased.
- Control monitors from the **video wall**, which also enables tours of cameras and layouts on selected panels or monitors.
- **Switch** cameras to selected monitors automatically in response to events.



- Track incidents with **Adjacent Camera Mapping**.
- Find footage using **Smart Search** tools.
- Quickly **review footage**.
- Control **PTZ cameras** for object tracking.
- Trigger commands in **response to events**.
- Detect abandoned objects and loitering.
- **Archive video** to media devices.

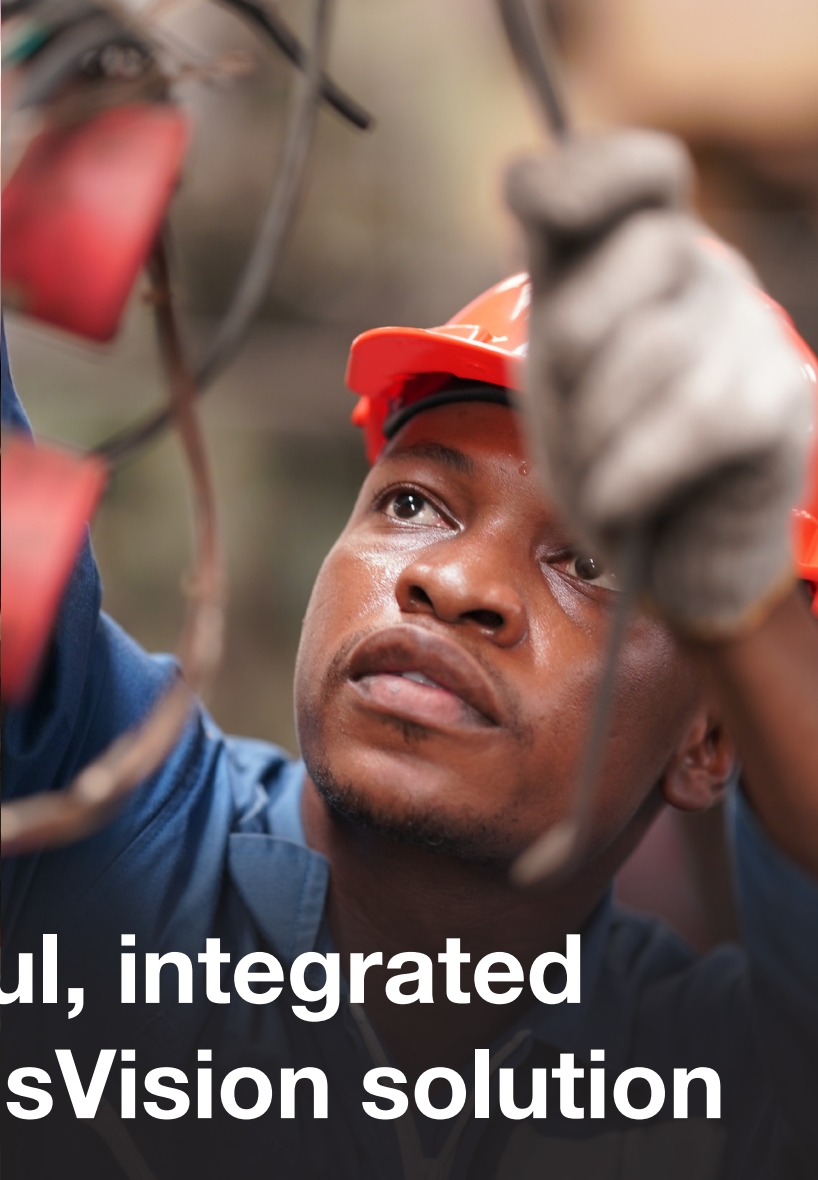
CathexisVision®

Third-party systems integration

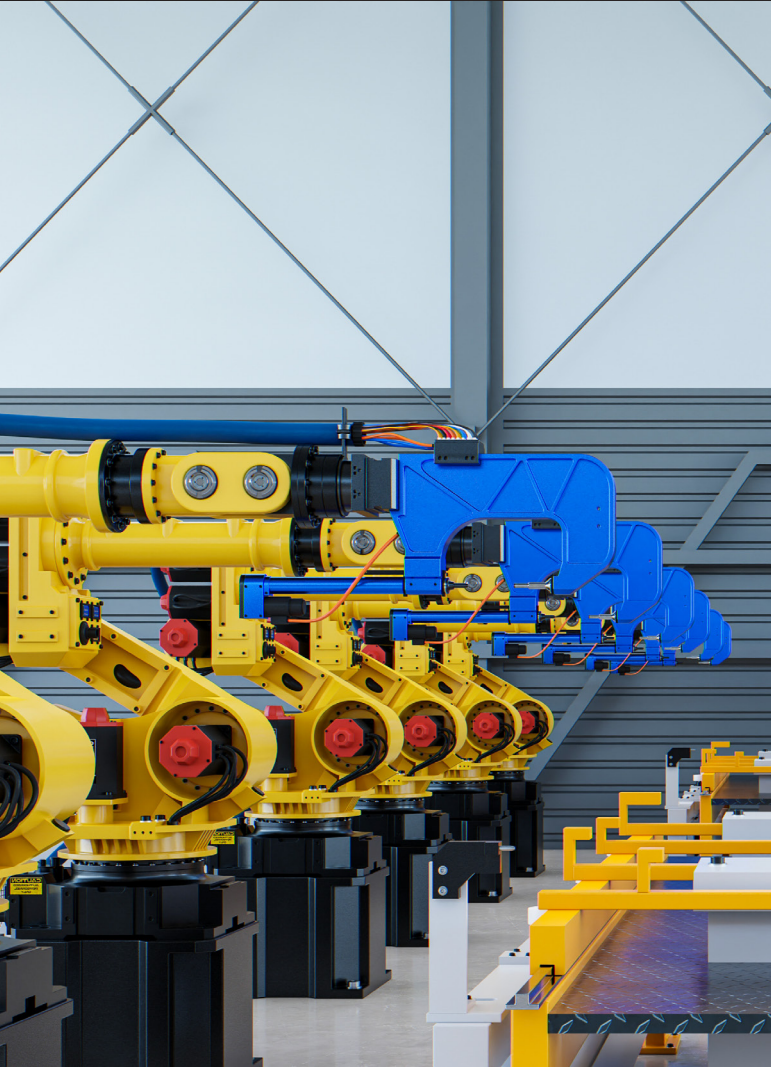




CATHEXIS



Powerful, integrated CathexisVision solution



CathexisVision[®]
Video Monitoring Solutions